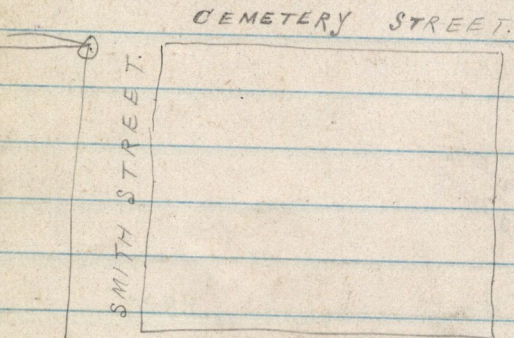
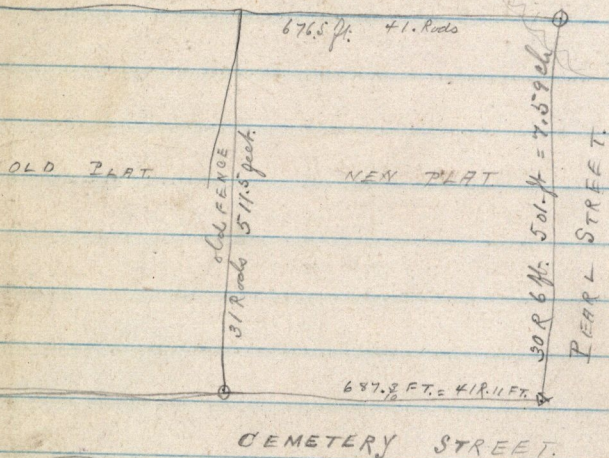


November 17-1885

EXTENSION OF OGDEN CITY CEMETERY

slight
dip
hill



82 Rods of fencing.

Total length of Cemetery inside of fences from W. side to Pearl Street = 25.10 ch = 1656.6 feet, and 7.75 ch = 511.5 ft. 74 S. side fences: on S side 2 rd road & 71 side 1 Rod road to be platted on space 12' x 6" = 60 ft to 1 inch